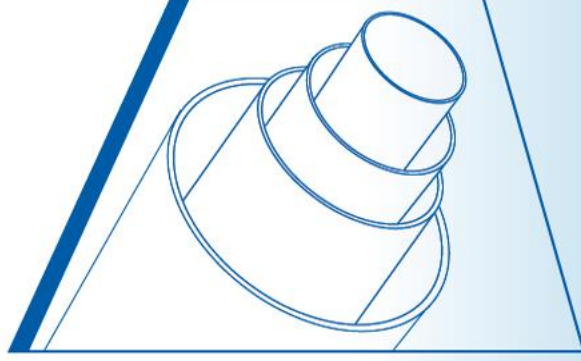
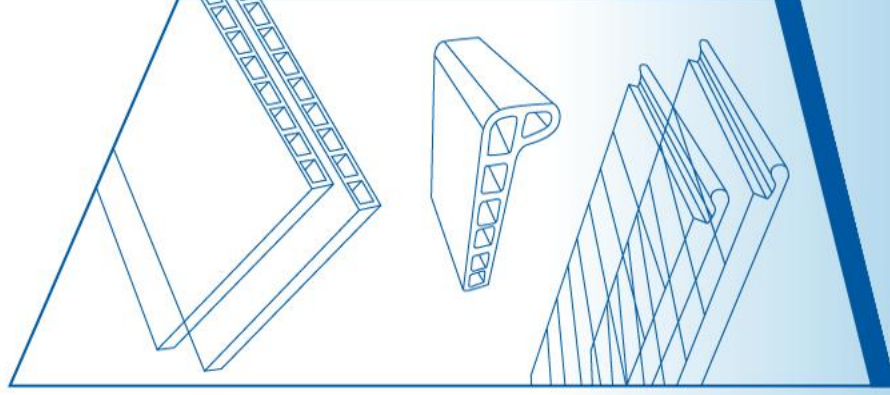
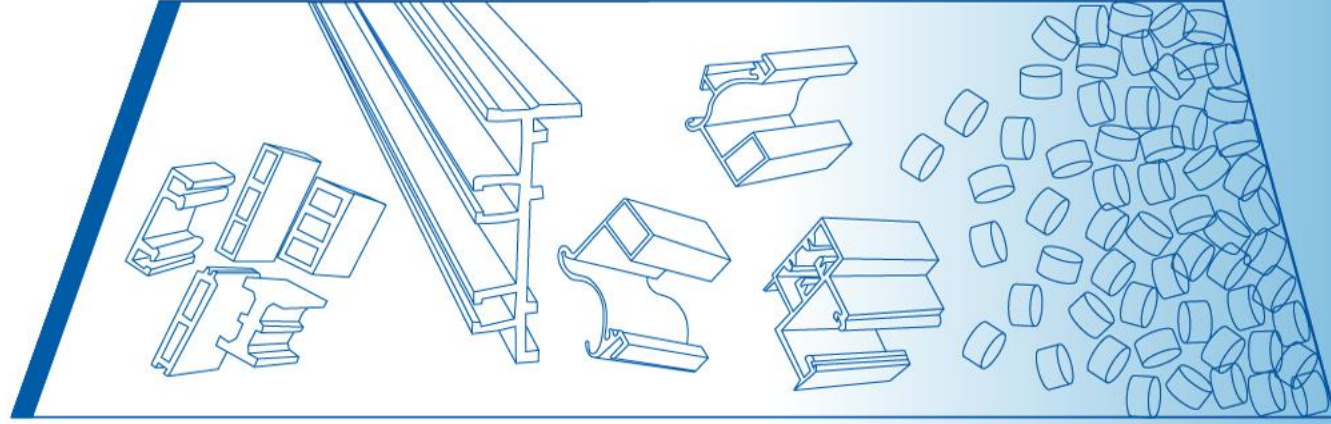


PROFILE/PIPE / GRANULES /

POWDER PROCESSING MACHINE





Profile /Board Extrusion Lines

- 04 PVC wood-plastic profile extrusion line
- 05 YF series wood-plastic wide door board extrusion line
- 06 Pvc roof tile extrusion line
- 08 Pvc+ASA/PAAM glaze roof tile production line
- 23 Pvc profile(trunking, ceiling, window profile) extrusion line
- 23 Automatic trunking punching machine



Pipe Extrusion Lines

- 11 PPR/PE /PB pipe extrusion line
- 12 Φ 20-800mm UPVC CPVC MPVC pipe extrusion line
- 14 Pvc four cavity production line
- 15 PE carbon spiral reinforcing pipe extrusion line
- 15 PE PVC singel wall corrugated pipe extrusion line



Waste plastic recycling&granulating lines

- 17 PET bottle crushing washing drying line
- 19 Pp pe flakes/film/bags crushing washing drying line
- 20 PVC /WPC hot cutting granulating line
- 20 PE film double stage pelletizing line
- 21 PP PE flakes pelletizing line
- 21 PP PE film/bags granulating line
- 22 PET bottle flakes pelletizing line



Mixer and mixing plant

- 23 SRL-Z series heating /cooling mixer unit
- 24 SRL-W series horizontal heating/cooling mixer unit
- 24 Pellets /powder automatic charger
- 25 SHR high speed mixer
- 26 PVC compounding production line



Waste pellets screening ,conveying, weighing, packing system

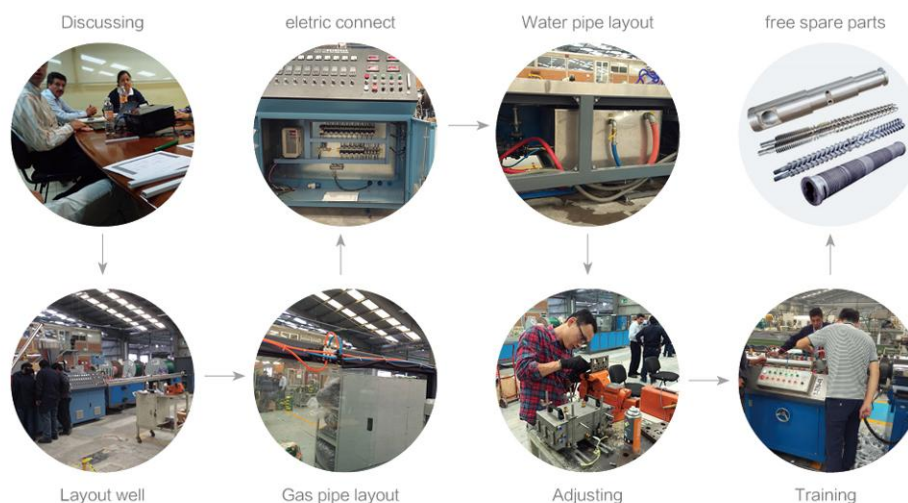
27



Auxiliary machines

- | | |
|--|--------------------------|
| 22 wpc profile crushing milling system | 33 Vibrator/screen |
| 28 Shredder for pipes/tire/baled plastic | 33 PP PE PVC pulverizer |
| 29 Crusher for pipe/profile | 33 Printer |
| 29 Single /double coiler for pipe | 34 Vertical drying mixer |
| 30 SGK-630 plastic pipe auto belling machine | 34 Hopper dryer |
| 31 Plastic agglomerator | 35 Moulds |
| 32 Auto loader for powder /pellets | |

After Sale Service



PVC wood-plastic profile and extrusion line



Application

Fetching the European and American advanced technology and uniting with our domestic condition, our company develop this production line. It possesses the features such as novel style, reasonable structure and easy to operate. The main extruder in this line, manufactured by our company, matches with auxiliary machines and die head. This production can realize full

automatic control from feeding to staking. Meanwhile each machine can be regulated manually. It is with the high elasticizing capacity, low energy consumption, high efficiency high cost performance, long life and other advantages. It's the best equipment to produce all kinds of plastic profile.



Two step method production line parameters

Main technical data				
Mode	Product Max width (mm)	Extruder mode	Extruder power (kw)	Max.capacity (kg/h)
YF108	108	SZJ51/105	18.5	100
YF180	180	SZJ51/105orSZJ50/110	22	100
YF240	240	SZJ65/132	37	150-200
YF300	300	SZJ65/132	37	150-200
YF400	400	SZJ80-156	55	250-300
YF500	500	SZJ80-156	55	250-300
YF600	600	SZJ80-156	75	300-350

YF series wood-plastic wide door board extrusion line

Application

Our company successfully developed PVC wood-plastic foamed plate production line. The product of wood-plastic foamed plate collects advantages of wood and plastic. It not only has natural wood face, but also conquers nature wood shortage. It has good processing ability which is similar to wood; It can be process by saw, ingot, and dig, just use wood tools. The force is much better than normal wood. It has physical characteristics, such as resistant to compression, resistance to impact and others, which are similar to hard wood, and its durable function is clearly better than normal wood, wood-plastic material and the products can be resistance strong acid and alkali, water proof,



corrosion resistance, besides, germ can not breed on it. Its not motheaten, it can be aging resistance, static electricity resistance, flame retardant.

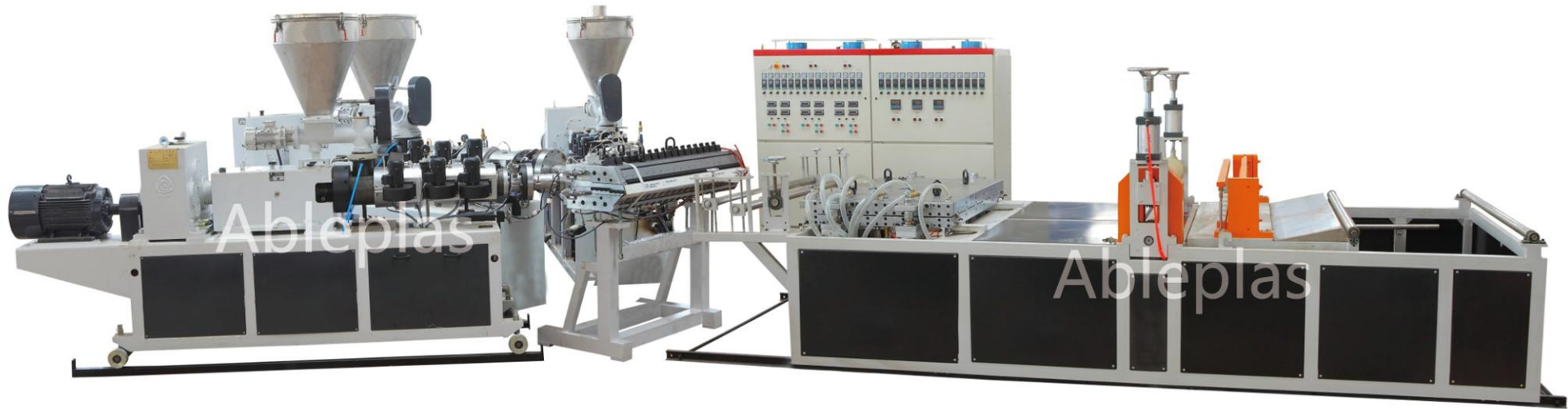
The product can be used in making building template, toy board, tray, package box, sleeper, outdoor floor, railings, garden chair and other outdoor facilities, indicating plate, circulating box, roof beam etc.



Technical Parameter

Specification	width	thickness
A	≤ 1220	20
B	≤ 1220	25
C	≤ 1220	30

PVC roof tile extrusion line

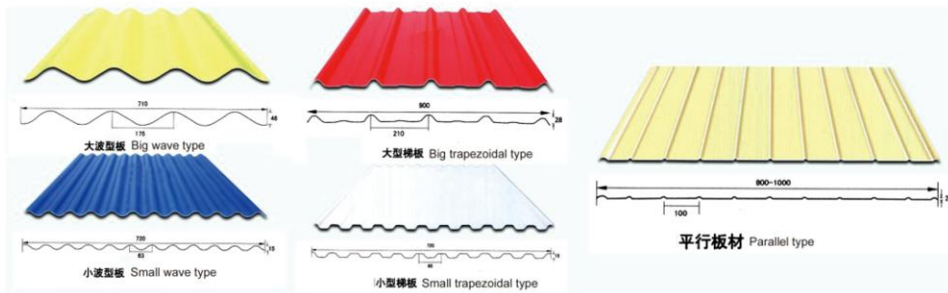


Characteristics

- 1.Optional to adopt conical twin screw extruder and parallel twin screw extruder
- 2.Supply formula guide and staple raw material purchase
- 3.Professional analyzing and design by considering production cost and tile's performance
- 4.Single layer or A+B/A+B+C/A+B+A layers available

Advantage

Anti-noisy, anti-erosion, heating resistance and water proof

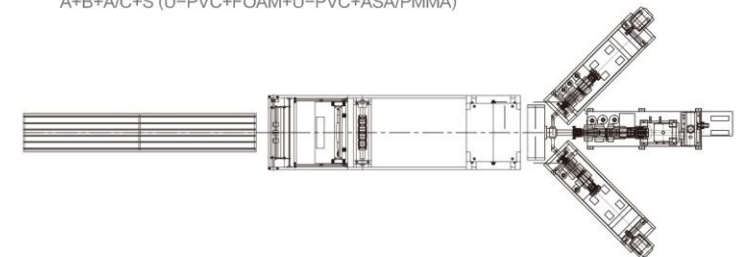


Layout of the A+B+C structure

Multilayer structure is divided to:

A+B(+A/C) (U-PVC)

A+B+A/C+S (U-PVC+FOAM+U-PVC+ASA/PMMA)



PVC+ASA/PMMA glaze roof tile production line



Characteristics

1.This production line is mainly used to produce PVC glaze tile which width is 720,930,1100mm, thickness is 2mm,2.5mm 3mm.

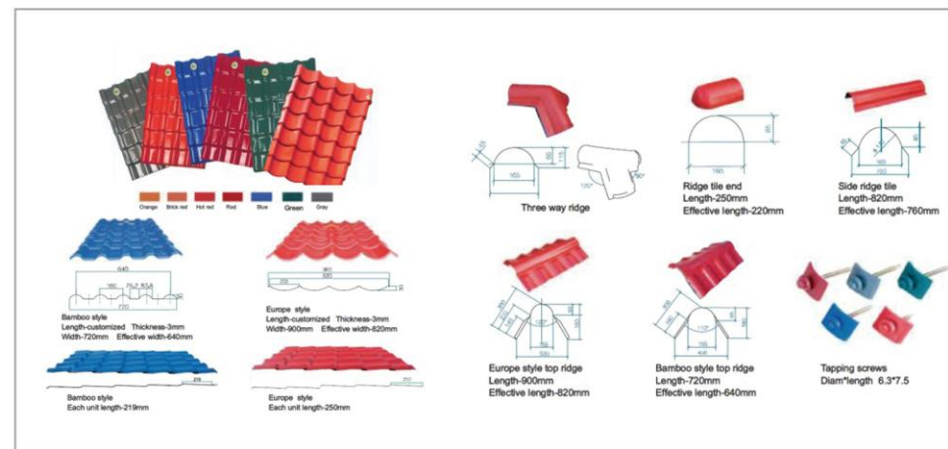
2.PVC,ASA or PMMA compound roof tile production line consists of conical double screw extruder SJZ80/156, single screw coextruder, extruding tool, forming machines for main tile and ridge tiles, haul-off, cutter, stacker;

3.Supply formula guide service and staple raw material purchase

4.Professional analyzing and design by considering production cost and tile's performance.



Unique technology PVC/ASA compound decorated tile

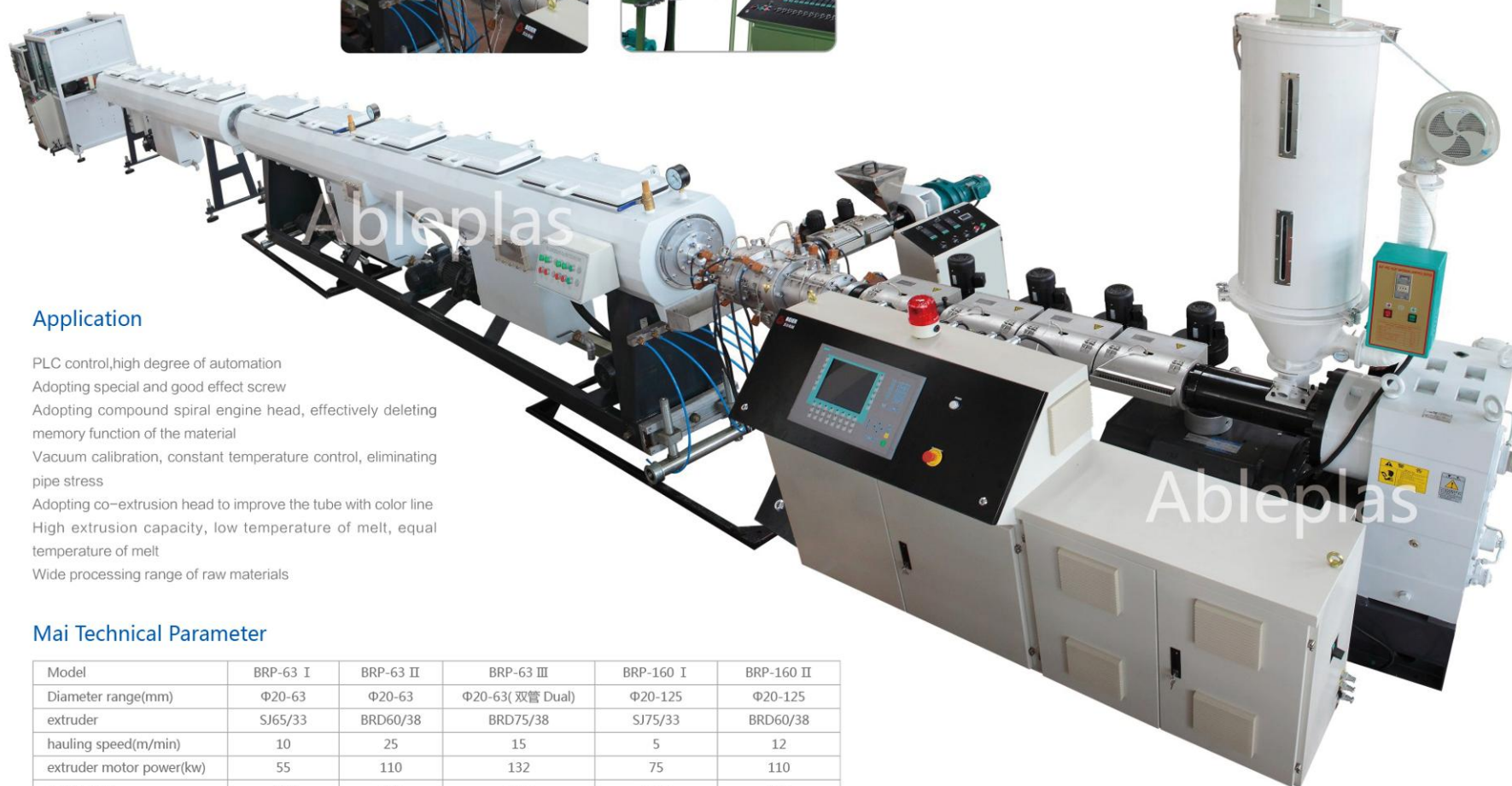


Advantage

Anti-noisy, anti-erosion, heating resistance and water proof



PP-R PE-RT PB pipe extrusion line

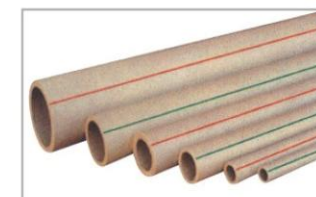


Application

PLC control, high degree of automation
 Adopting special and good effect screw
 Adopting compound spiral engine head, effectively deleting memory function of the material
 Vacuum calibration, constant temperature control, eliminating pipe stress
 Adopting co-extrusion head to improve the tube with color line
 High extrusion capacity, low temperature of melt, equal temperature of melt
 Wide processing range of raw materials

Main Technical Parameter

Model	BRP-63 I	BRP-63 II	BRP-63 III	BRP-160 I	BRP-160 II
Diameter range(mm)	Φ20-63	Φ20-63	Φ20-63(双管 Dual)	Φ20-125	Φ20-125
extruder	SJ65/33	BRD60/38	BRD75/38	SJ75/33	BRD60/38
hauling speed(m/min)	10	25	15	5	12
extruder motor power(kw)	55	110	132	75	110
max output	150	350	450	250	350



Characteristic

The line is mainly used for producing PP-R pipe also used for producing PE-RT, PB, PE-X resin pipe.



Φ20-Φ800 series U-PVC/M-PVC/C-PVC pipe extrusion line



Application

Φ20-Φ800 series PVC pipe extrusion line is mainly used in manufacturing the pipe for agricultural and constructional plumbing, cable laying etc. This line is composed by conical twin-screw extruder, mould, vacuum calibration tank, haul-off, cutter and staker etc. The extruder and haul-off adopt imported AC frequency control device, vacuum pump and haul-off motors adopt high-quality brand. The haul-off methods are two-claw, three-claw, four-claw, six-claw, eight-claw etc. you may choose saw cutting type. It is additionally attached with the length counter and intensifying device. The equipment is with the reliable performance and high production efficiency. Our company can also manufacture special pipe production lines, eg. Spiral silencing pipe and core foaming pipe according to your requirements.



四管挤出
Four output



双管挤出
Dual output

Mai Technical Parameter

Diameter(Mm)	16-40Dual	20-63Dual	20-63	50-160	63-200	160-315	315-630	560-800
Conical Extruder	SJZ51/105	SJZ65/132	SJZ51/105	SJZ65/132	SJZ65/132	SJZ80/156	SJZ92/188	SJZ105/1216
Extruder Power(Kw)	18.5AC	37AC	18.5AC	37AC	37AC	55AC	110AC	160AC
Max. Lineal Speed	10	15	15	8	3.5	3	1.2	1.3

PVC Four Cavity Production line

Features and application

4 cavity PVC electrical tube, water supply pipe extrusion line can extrude four pipes at same time on one machine. This line can save investment cost is factory building and production, which increase the capacity a lot and reduce production time. SJSZ65 conical twin-screw extruder can easily reach 5.5~6.5ton/per day, the production speed take 16mm as example can get more than 8~10m/min.



Mai Technical Parameter

Suitable dai: $\Phi 16-\Phi 32\text{mm}$
Four station haul-off: up-down two caterpillar tracking
Drawing speed: 1~10m/min
Traction:6000N



The whole line is composed of conical twin screw extruder $\Phi 65\text{mm}$, 4 cavity mould, 4 cavity cooling calibration tank, 4 station haul-off, 4 station tipping table.

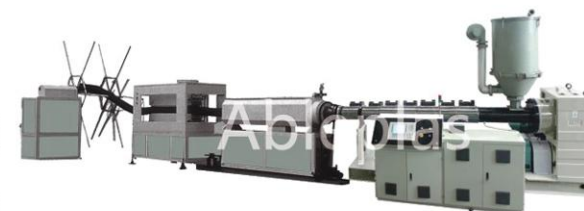
PE carbon spiral reinforcing Pipe extrusion line

Application

Single screw extruder especially used for polyolefine material possess effective plasticizing effect and high extrusion speed.

The special detached type compounding screw and die head with spiral structure & reasonable channel are applicable to produce pipes with smooth inside and outside face.

Unique calibration and cooling mode is capable of producing pipe with diameter from



$\Phi 50$ to $\Phi 200\text{mm}$, production speed is up to 0.4~1.5m/min.

All kind of polyolefine material, multi-layers spiral strengthening pipe can be Co-extruded, recycled materials can be used in production;



Mai Technical Parameter

Model	Pipe range(mm)	Extruder model	Max. output(kg/h)	Extruder motor powe(kw)
BRCP	$\Phi 50-100$	SJ65/33	150	55
BRCP	$\Phi 100-200$	SJ90/33	450	180

PE.PVC single-wall corrugated pipe extrusion line

Application

This line is used to produce PVC,PP,and PE small diameter single wall corrugated pipe.

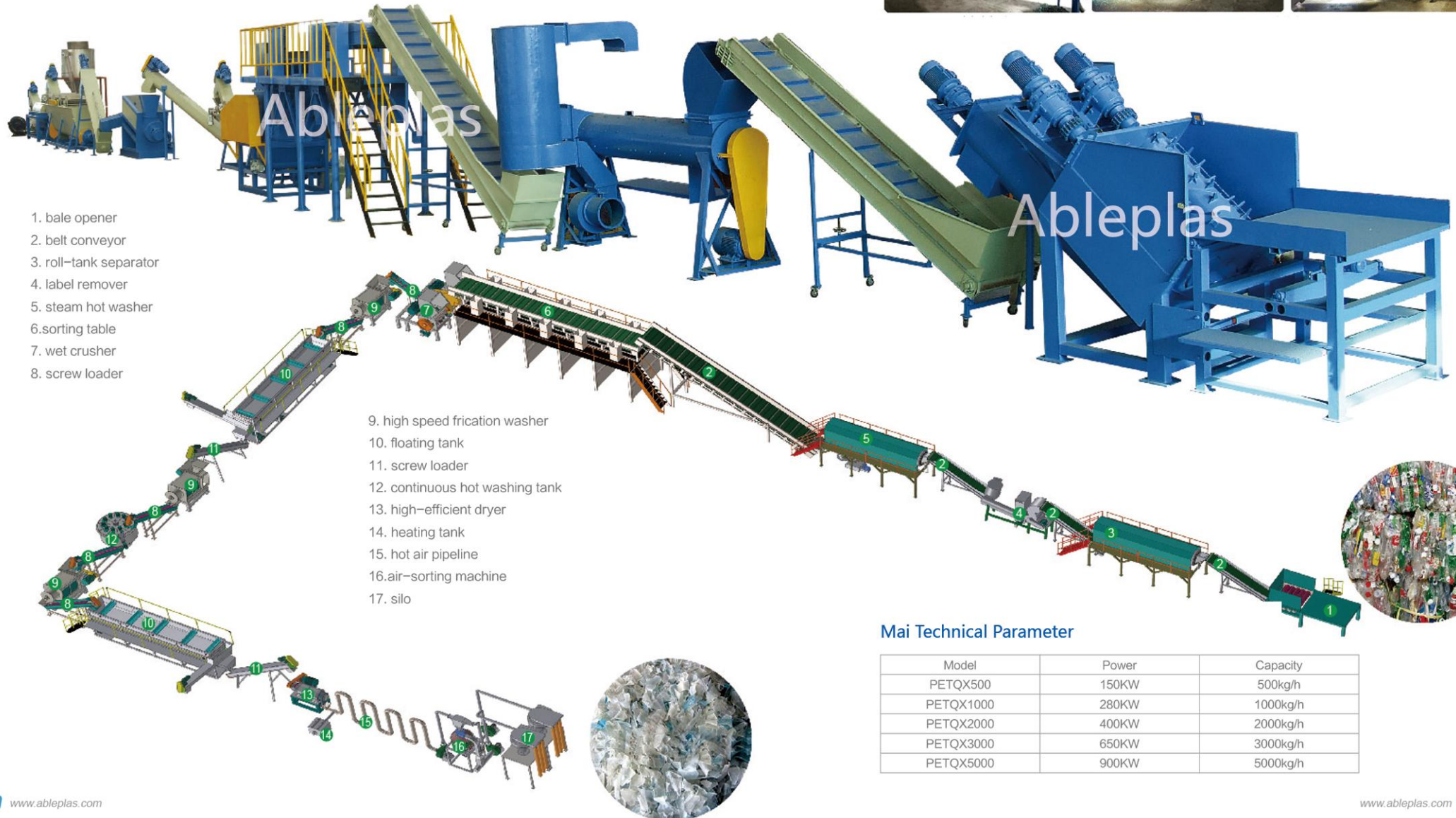
Use mould forming once, keep inside and outside smoothly, and corrugation equably. Product is used for wire and cable, washer drainpipe, dust collector pipe,vent pipe etc. $\Phi 4-6.9\text{mm}$ small corrugated pipe used for car wire, it supplies a gap in China.



Mai Technical Parameter

Model	Pipe range (mm)	Extruder model	Max. output (kg/h)	Extruder motor powe (kw)
BRSCP25	$\Phi 6-25$	SJ45/30	30	22
BRSCP63	$\Phi 16-63$	SJ50/30	70	30
BRSCP75	$\Phi 16-75$	SJ65/33	120	37

PET bottle crushing / washing / drying production line(500-2000kg/h)



Mai Technical Parameter

Model	Power	Capacity
PETQX500	150KW	500kg/h
PETQX1000	280KW	1000kg/h
PETQX2000	400KW	2000kg/h
PETQX3000	650KW	3000kg/h
PETQX5000	900KW	5000kg/h

PE,PP Flakes crushing / washing / drying production line(500-2000kg/h)

Main Technical Parameter

Model	Power	Capacity
PEQX500	113kw	500kg/h
PEQX1000	263kw	1000kg/h
PEQX2000	216.2kw	2000kg/h



PVC and wood plastic hot-cutting Granulation line



Mai Technical Parameter

Model	Extruder model	Max. output (kg/h)	Extruder motor power (kw)
BRPVC51	SJZ51/105	150	18.5
BRPVC55	SJZ55/110	190	22
BRPVC65	SJZ65/132	250	37
BRPVC80	SJZ80/156	350	55
BRPVC92	SJZ92/188	700	110

Application

This line is mainly used in hot-cutting granulation of PVC and wood plastic, etc.

High cutting precision and efficiency.
Convenient installation and moving.

PE Film Double-stage Pelletizing Production line



Mai Technical Parameter

Extruder		Sub extruder	
Motor	75kw	Motor	30kw
Screw Diameter	130mm	Screw Diameter	130mm
Screw L/D Ratio	33:1	Screw L/D Ratio	12:1
Forced Feed Hopper	4kw	Hydraulic Screen Changer	Two-hole type Φ280mm
Hydraulic Screen Changer	Two-hole type Φ280mm	Water cooling tank	4500 x 600 x 250 mm
Hydraulic Power Unit	4kw	Pellet cutting machine	5.5kw

PE. PP Flake Pelletizing Line



Mai Technical Parameter

Model	SJ120	SJ150	SJ180
Main motor power (kw)	110-132	132-185	160-250
Ortput (kg/h)	250-350	350-500	500-800

PE. PP Film Pelletizing Line



Mai Technical Parameter

Model	SJ70-TLJL200	SJ100-TLJL500	SJ120-TLJL800	SJ150-TLJL800
Main motor power (kw)	37+30	90+55	132+75	160+90
Ortput (kg/h)	80-110	180-260	300-400	400-600



Wpc/pvc profile pipe crushing pulverizing machine

Introduction of wood milling machine

Adopting the new domestic technique and production process, the milling machine is composed of coarse crushing device, fine crushing device and fans. The machine body with two layers adopts water circulation cooling and it is a new material for sound-proof and heat mission in the inner chamber, so the machine works in low noise. With the features of fine appearance, durable performance, and high output that is 50% higher than traditional one, this kind of milling machine is the leading breaking plant in china at present.



Main Technical Parameter

Application : wpc profile, pvc profile, pvc pipe

Advantage :

1. It can make profile/board/pipe into powder directly.
2. Motor power 45kw, 350-450kg/h, more energy saving, higher output than separate crusher and pulverizer
3. Blades nitrided treatment, service life 1.5 year.
4. Final powder is about 30mesh, can be reused directly.



PET Bottle flakes recycling pelletizer

This TSSK Series Twin / Double Screw Extruders are specially designed for PET bottles, flakes, other crushed materials, with good performance and high output, and are easy to operate and maintain.

This machine can carry out ideal viscosity of PET without complicated precrystallization dryer system. Only a bit IV will be reduced. It can improve IV in the condition of adding some suitable additive.



Material shapes: bottle flakes, sheets, etc

Production Process:

Use a Spiral charger to feed materials into the Extruder - materials evenly squeezed, melted and plastified in the Extruder - material strips coming out from the machine head, after filtering system (Hydraulic Screen Changer) - being cooled by Water tank - being dried by Gale dryer (strong dryer) - being transferred and cut in the Pelletizer - being collected by Silo - the End

Technical Parameters

Model	TSSK-20	TSSK-30	TSSK-35	TSSK-50	TSSK-65	TSSK-75	TSSK-95
Screw diameter(mm)	21.7	30	35.6	50.5	62.4	71.2	91
Rotary speed(rpm)	600	400	400/600	400/500	400/500	400/500	400/500
Main motor power(kW)	4	11	11/15	37/45	55/75	90/110	220/250
L/D	32-40	28-48	32-48	32-48	32-48	32-48	32-40
Output(kg/hr)	2-10	5-30	10-80	20-150	100-300	300-600	600-1000



PVC Profile extrusion line

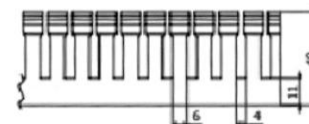


Products and machine characters

Abelplas' s production does not only include standard machines, but also offers complete profile extrusion lines, tailor-made according to customer' s requirements, still assuring high performance and competitive prices.



Auto punching machine (PLC control system+touch screen)



Belt transport

Motor : 0.75KW

Transport belt : V-Ribbed Belt

Side punching machine

Hydraulic station motor power : 3KW, Oil tank : 75L

Fixed length transporting serve motor 1.5KW, adopt belt fixed-length transporting, belt length: 250mm

Punching method : hydraulic auto punching

Punching way : three side punching



Punching mold material: SKD11, easy install and repair

Control system : PLC + touch screen

Dimension : 8000mmX800mmX1700mm

Punching speed : 4-5m/min



Ableplas

SRL-Z Series

heating/cooling mixer unit



Product Description

SRL-Z Series Vertical Heating/Cooling Mixer Unit is widely used in mixing, drying, coloring various kinds of resin such as PVC, PP, PE. They can also be used in dryness of ABS and polycarbonate, and mixing hydroxybenzene, aldehyde resin.

Main technical data

SRL-Z	Heat/Cool	Heat/Cool	Heat/Cool	Heat/Cool	Heat/Cool
Total volume (L)	100/200	200/500	300/600	500/1250	800/1600
Effective capacity (L)	65/130	150/320	225/380	330/750	600/1050
Stirring speed (RPM)	650/1300/200	475/950/130	475/950/100	430/860/70	370/740/50
Mixing time (Min.)	8-12	8-12	8-12	8-12	8-12
Motor power (KW)	14/22/7.5	30/42/11	40/55/11	55/75/15	83/110/22
Overall dimension(mm)	1950*1600*1800	4580*2240*2470	4800*2640*2480	5600*3000*3100	5170*3200*4480
Weight(kg)	2200	3400	3600	6500	9800

SRL-W Series horizontal heating/cooling mixer unit



Main technical data

SRL-W	Heat/Cool	Heat/Cool	Heat/Cool	Heat/Cool	Heat/Cool
Total volume(L)	300/1000	500/1500	800/2000	1000/3000	800*2/4000
Effective volume(L)	225/700	330/1000	600/1500	700/2100	1200/2700
Stirring speed(rpm)	475/950/80	430/860/70	370/740/60	300/600/50	350/700/65
Mixing time(min)	8-12	8-15	8-15	8-15	8-15
Power(KW)	40/55/7.5	55/75/15	83/110/22	110/160/30	83/110*2/30
Weight (kg)	3300	4200	5500	6500	8000

Pellets/ powder charger



Main technical data

Model	Feeding capacity (5m, kg/h)	Motor power(kw)	Material injection pipe I.D (mm)	Air-breathing pipe I.D (mm)
KFJ200	200	1.5	Φ38	Φ51
KFJ400	400	2.2	Φ38	Φ51
KFJ600	600	4	Φ51	Φ64
KFJ1000	1000	5.5	Φ51	Φ64

Product Description

Features

High in automatic level;
Small in volume and large in charging amount;
Easy to operate, and convenient to move.

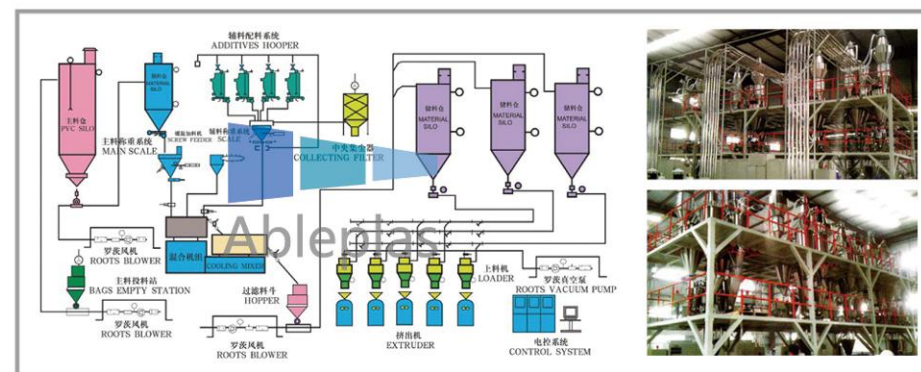
SHR Series high speed mixer



Main technical data

Model	Total Volume	Effective Volume	Motor Power	Main Shaft Speed	Heating Way	Unlad Way
SHR-5A	5	3	1.2	1400	Self-friction	Manual
SHR-10A	10	7	2.2/3.2	750/1500		
SHR-25A	25	17.5	5.5	1440	2KW	Pneumatic
SHR-50A	50	30	7.0/11.0	750/1500(510/1013)	4KW	
SHR-100A	100	75	14/22	525/1050(650/1300)	6KW	
SHR-200A	200	150	30/42	490/980	6KW	
SHR-300A	300	225	40/55	480/964	9KW	
SHR-500A	500	375	55/75	441/886	9KW	
SHR-800A	800	560	83/110	330/660	Self-friction	
SHR-200C	200	150	30/42	650/1300		
SHR-300C	300	225	40/55	475/950		
SHR-500C	500	375	55/75	500/1000		
SHR-800C	800	560	83/110	330/660		
SHR-1000C	1000	700	110/160	330/660		

Compounding production line



Craft procedure

A、Dump PVC etc. Materials

PVC and other material are manually poured into dump station and conveyed into 4 storehouses pneumatically. Workers will be alert by the material meter signal to feed or stop. The store house is equipped with losing material device

B、Measurement and feeding of materials

Main material is fed into 3 electronic balance and then mixer by rotary valve below store house.

C、Putting auxiliary materials

Auxiliary materials are fed by step in feeder after manual measuring. When mixer ask auxiliary materials, the pneumatic board valve come to open, step in feeder starts, infrared ray test the material overpass, step in feeder stops, time-lapse stop pneumatic board valve.

D、Heating mixing and cooling mixing

In heating mixing, at the same time water is drained by compulsion absorption device; when materials reach the set temperature, discharging valve will open automatically and material enter cooling mixer. When material come to set temperature of cooling, cold discharging valve will open automatically and materials move into a storehouse of 1 m²

E、Dust catch

PVC, dry material and broken materials will be clean by an impulse dust catcher; this device can adjust pulse frequency and width.



Screening,conveying, weighing,packing system for granules

Product Description

Abel series granules material loading ,screening ,dust separating ,conveying and packing system
This system is mainly used in convey ,screening ,dust/ metal removing and packing production .During the whole period ,the PLC central control system will be adopted and

the central monitor on the post.

The system will meet the needs of the production demand and your present condition of the plant house .The annual output is 2000~100000 Ton .



Belt conveyor

- Total length:2M
- * Width of belt:655mm
- * Thickness of belt:5mm
- * Height:1160mm
- * Electric magnetic iron remover
- * Electrical machine: Siemens 0.75KW
- * Frame: No.7 steel



Pouring station

- * Appearance:900*955*950mm
- * Thickness of stainless steel:1.5mm
- * Vibration motor:0.37kw
- * Manual gate valve



Steel separator

- Appearance:1430*765*1100mm
- * Width of belt:505mm thick:10mm
- * Pipe length:555mm diameter:150mm
- * Motor: Siemens 0.75kw



Vibrating screen

- Dimension:1800*750*800mm
- * Thickness of the stainless steel:1.5mm
- * Upper layer:6mm
- * Under layer:2mm
- * Motor power:0.37Kw*2
- * Made by stainless steel

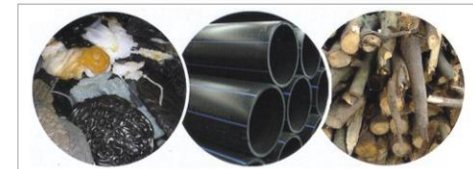
Shredder



Performance and structure

The shredder is mainly used to recycle, rend and crush the waste material; the a pplicable material is included in the big solid block of plastic, large diameter PE pipe, bundies of film, paper and fiber, blocks of wood, metal and so on.

Chose the suitable model a cording to the size of the waster material; the shredder is divided to the single and double shaft.



Main technical data

Model	BSJ	BSJ	BSJ	BSJ	BSJ	BSJ
chargig diameter(mm)	500x600	650x740	720x740	850x900	1050x1100	1250x1350
powr(kw)	22.5	32.5	35.5	42.5	50.5	62.5
Speed(r/min)	90	90	90	90	90	90
qty of rotary blade(pcs)	24	30	33	39	48	57
working pressuer(mpa)	6~10	6~10	6~10	6~10	6~10	6~10
capacity(kg/h)	250~350	300~450	400~600	450~750	600~900	750~1100

SWP 400 Plastic Crusher

Function and structure

The Production Line Is Mainly Used In Hot-Cutting of PVC and Other Plastic.



Single / double coiler

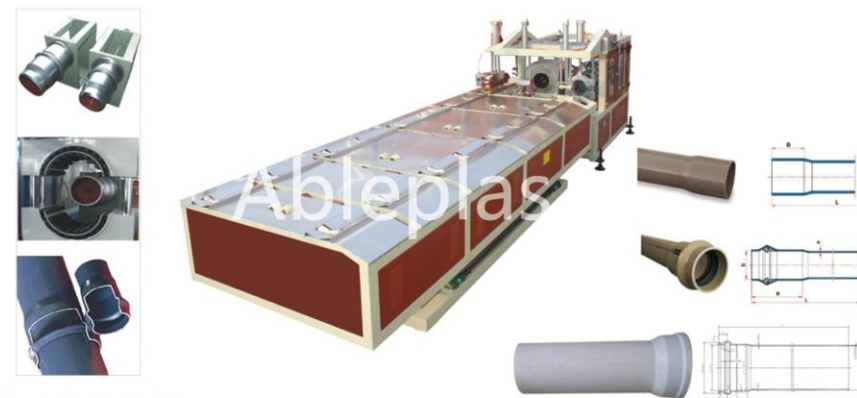
The machine was mainly used to tolling and packing of the plastic soft pipe to matches other equipment in uxage to effect the automaization of processing.

Main technical data

Max Outside Diameter Of Coiler(Mm)	220
Max Linear Speed (M/Min)	12
Pipe Size(Mm)	16-63
Pressure Of Air (Mpa)	0.3-0.6



SGK-630 Eries Platic Pipe Auto Belling Machine



Main technical data

The diameter of PVC pipe(mm)	Φ50-160	Φ50-250	Φ160-400	Φ200-500	Φ400-630
Applicable wall thickness(mm)	2.9-9.5	2.9-15	4-23.7	5-29.7	9.8-24
Cooling type	Fan or water cooling	Fan or water cooling	Water cooling	Water cooling	Water cooling
Output	2-40 pipes/hour	2-40 pipes/hour	2-30 pipes/hour	2-25 pipes/hour	2-15 pipes/hour
Socket type	Solvent, Rubber-Ring Expansion Or Rubber-Ring Lip Type				
Operation type	Auto Matic Or Manual				
Discharging type	Automatic				
The heating control	Heating Adjustment Avilable				

Semi automatic belling machine



Plastic agglomerator



Vibrator

Function and structure

Suitable for grading granulated stuffs and screening out powder and liquid.

ZJF Plastic Powder Loader

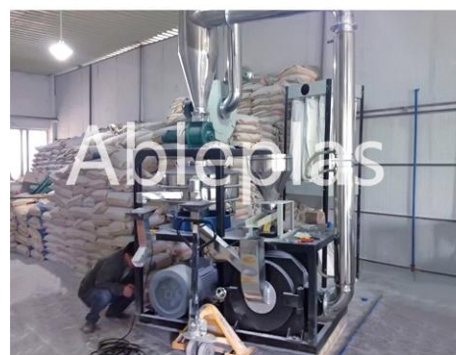
Suitable for low filler powder materials.



Main technical data

Model	ZJF100	ZJF300	ZJF700
Nominal Transmission Capacity	100	300	700
Hopper Capacity	100	120	150
Spring Diameter	Φ30	Φ36	Φ59
Max.transfer Capacity	200	450	1000
Length Transfer Pipe And Spring(M)	3	3~5	3~5
Container Storage Capacity	120	150	200
Motor Power	1.1	1.5	2.75
Overall Dimensions	Φ650x980 850x620x740	Φ650x1162 905x655x840	Φ820x1550 950x950x960
Weight (Kg)	120	150	250

SMF high-speed whirlpool plastic mill



PE scraps pulverizer

Mode	Motor	Capacity
SMF600	55kw	250~300kg/h
SMF500	45kw	200~250kg/h
SMF400	37kw	100~150kg/h

PVC scraps pulverizer

Mode	Motor	Capacity
SMP800	75kw	400~450kg/h
SMF600	55kw	250~300kg/h
SMF500	37kw	200kg/h
SMF400	30kw	100kg/h

SH Series Plastic Mixer

Function and structure

SH model plastic mixer equipped with mixing vane is used to mix plastic raw material with high speed. It is mainly suitable for mixing all kinds of granulated plastic and is one of essential equipments for plastics injector and extruder. It is simple in structure, easy in operation even in mixing.

1. Both mixing vane stainless, and pall are made of stainless steel.
2. Easy to install, disassemble and clean the mixing vane.
3. Mixing in sealed condition, be more safely and reliable.
4. Mixing the material completely and quickly. Be adjusted at option.



Printer

Function and structure

This printer is used in to print the pipe specification, model, factory name, brand, design etc on all kinds of pipes.

Main technical data

Model	TM
Common pipe dia (mm)	8-250
Max pipe dia (mm)	630
Suitable construction material	PVC, PE pipe



Ribbon printer



Ink printer

Extrusion mould





• Profile /Board Extrusion Lines

PVC wood—plastic profile extrusion line
 YF series wood—plastic wide door board extrusion line
 PVC roof tile extrusion line
 PVC+ASA/PAAM glaze roof tile production line
 PVC profile/trunking, ceiling, window profile) extrusion line
 Automatic trunking punching machine

• Pipe Extrusion Lines

PPR/PE /PB pipe extrusion line
 Ø 20—800mm UPVC CPVC MPVC pipe extrusion line
 PVC four cavity production line
 PE carbon spiral reinforcing pipe extrusion line
 PE PVC single wall corrugated pipe extrusion line

• Waste pellets screening ,conveying,
 weighing, packing system

• Waste plastic recycling&granulating lines

PET bottle crushing washing drying line
 Pp pe flakes/film/bags crushing washing drying line
 PVC,APVC hot cutting granulating line
 PE film double stage pelletizing line
 PP PE flakes pelletizing line
 PP PE film/bags granulating line
 PET bottle flakes pelletizing line

• Auxiliary machines

wpc profile crushing milling system
 Shredder for pipes/tire/baled plastic
 Crusher for pipe/profile
 Single /double coiler for pipe
 SGK-630 plastic pipe auto belling machine
 Plastic agglomerator
 Auto loader for powder /pellets
 Vibrator/screen
 PP PE PVC pulverizer
 Printer
 Vertical drying mixer
 Hopper dryer
 Moulds

• Mixer and mixing plant

SRL-Z series heating /cooling mixer unit
 SRL-W series horizontal heating/cooling mixer unit
 Pellets /powder automatic charger
 SHR high speed mixer
 PVC compounding production line



Contact Us

AblePlas machinery co.,ltd

Add: No.1 TongXin Road, LeYu Town, ZhangJiaGang City (near ShangHai, one
 and half an hour by car), JiangSu Province, China

Zip: 215622

Website: www.ableplas.com

Tel:+86(0)512 58529030

Fax:+86(0)512 58651907

Mail:service@ableplas.com

